



Webbs

Helping people move since 1994

Belt Road | Hednesford, Cannock | WS12 4JP
Offers In The Region Of £270,000

 **Webbs**
estate agents

Summary

**** DETACHED THREE BEDROOM HOME ** OPEN PLAN LOUNGE DINER ** MODERN KITCHEN AND SHOWER ROOM ** CORNER PLOT ** CLOSE TO TOWN CENTRE AND TRAIN STATION ** EXCELLENT SCHOOLS AND TRANSPORT LINKS ** GUEST WC ** ENCLOSED REAR GARDEN ** VIEWING ADVISED ****

Webbs Estate Agents are pleased to offer a spacious detached home for sale, offering easy access to Hednesford Town Centre, Train Station, excellent schools, and local amenities, and it is ideal for Cannock Chase. In brief consisting of entrance hall, guest WC, spacious open plan lounge diner leading to the modern kitchen. On the first floor, there are three generous double bedrooms and a modern shower room. Externally, the property has an enclosed rear garden, ample parking provided by a single garage and a generous driveway.

EARLY VIEWING ADVISED

Key Features

- DETACHED HOME
- EXCELLENT SCHOOLS AND TRANSPORT LINKS
- CLOSE TO HEDNESFORD TOWN CENTRE
- GUEST WC
- CORNER PLOT
- THREE DOUBLE BEDROOMS
- GARAGE AND DRIVEWAY
- MODERN KITCHEN AND SHOWER ROOM
- CLOSE TO CANNOCK CHASE
- VIEWING ADVISED

Rooms and Dimensions

ENTRANCE HALLWAY

GUEST WC

OPEN PLAN LOUNGE DINER
20'2" x 16'4" max (6.17 x 5.00 max)

MODERN KITCHEN
8'11" x 8'8" (2.73 x 2.65)

LANDING

BEDROOM ONE
10'9" x 10'5" (3.29 x 3.19)

BEDROOM TWO
10'5" x 9'10" (3.19 x 3.01)

BEDROOM THREE
10'10" x 9'4" (3.31 x 2.86)

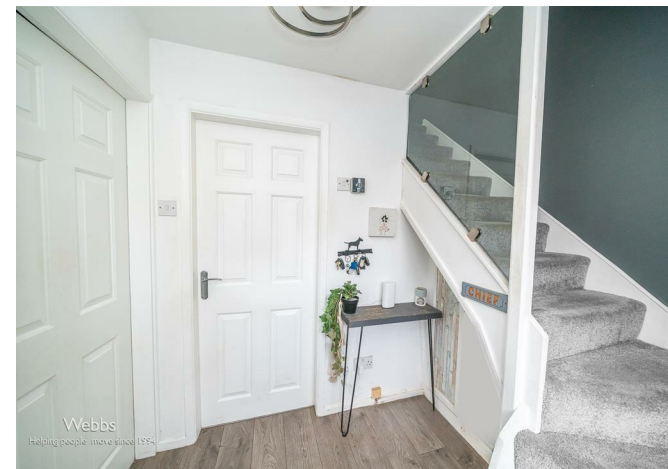
MODERN SHOWER ROOM

ENCLOSED REAR GARDEN

SINGLE GARAGE

LARGE DRIVEWAY

Identification checks - C





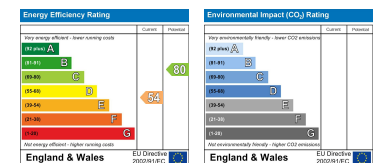
Ground Floor



First Floor



Webbs Estate Agents - endeavour to maintain accurate depictions of properties in Virtual Tours, Floor Plans and descriptions, however, these are intended only as a guide and purchasers must satisfy themselves by personal inspection.



153 Avon Road, Cannock, WS11 1LF

Tel: 01543 468846 | Email: sales@webbestateagents.co.uk | www.webbestateagents.co.uk